

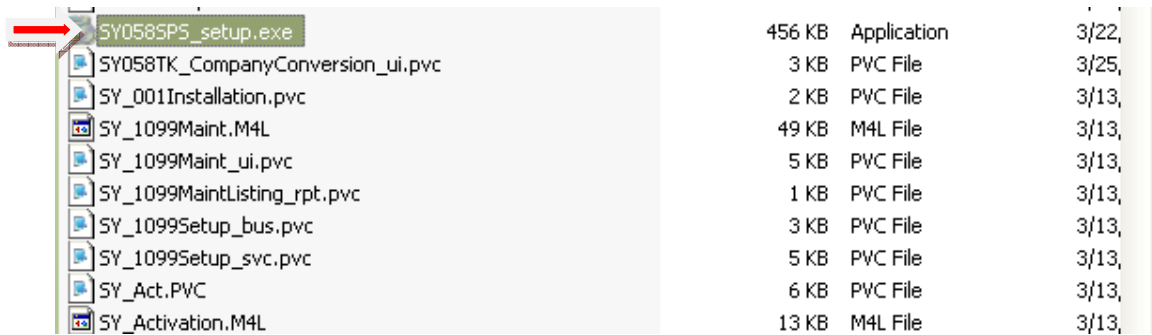
SPS Setup Guide

Before you begin please take note of the ff:

- This applies only to MAS 90/200 with Sage SU 18 or higher.
- This is only available if the P2 service pack dated 2/4/2011 or higher has been installed.

STEPS TO INSTALL SPS UPDATE:

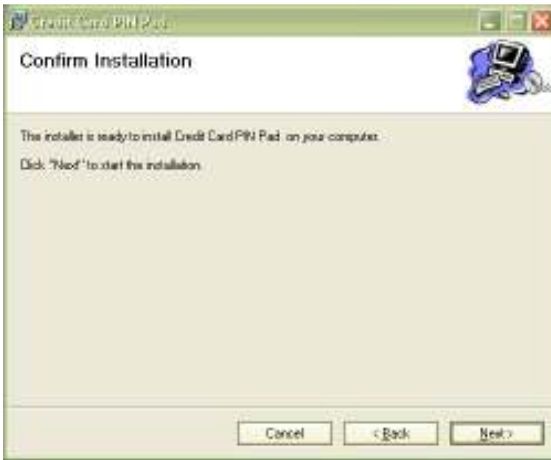
1. Browse out to your MAS 90 OR 200 installation folder ...\\MAS90\\SY
2. In the SY directory look for the SY058SPS_Setup.exe and run the executable file from the server



| File Name | Size | Type | Progress |
|----------------------------------|--------|-------------|----------|
| SY058SPS_setup.exe | 456 KB | Application | 3/22, |
| SY058TK_CompanyConversion_ui.pvc | 3 KB | PVC File | 3/25, |
| SY_001Installation.pvc | 2 KB | PVC File | 3/13, |
| SY_1099Maint.M4L | 49 KB | M4L File | 3/13, |
| SY_1099Maint_ui.pvc | 5 KB | PVC File | 3/13, |
| SY_1099MaintListing_rpt.pvc | 1 KB | PVC File | 3/13, |
| SY_1099Setup_bus.pvc | 3 KB | PVC File | 3/13, |
| SY_1099Setup_svc.pvc | 5 KB | PVC File | 3/13, |
| SY_Act.PVC | 6 KB | PVC File | 3/13, |
| SY_Activation.M4L | 13 KB | M4L File | 3/13, |

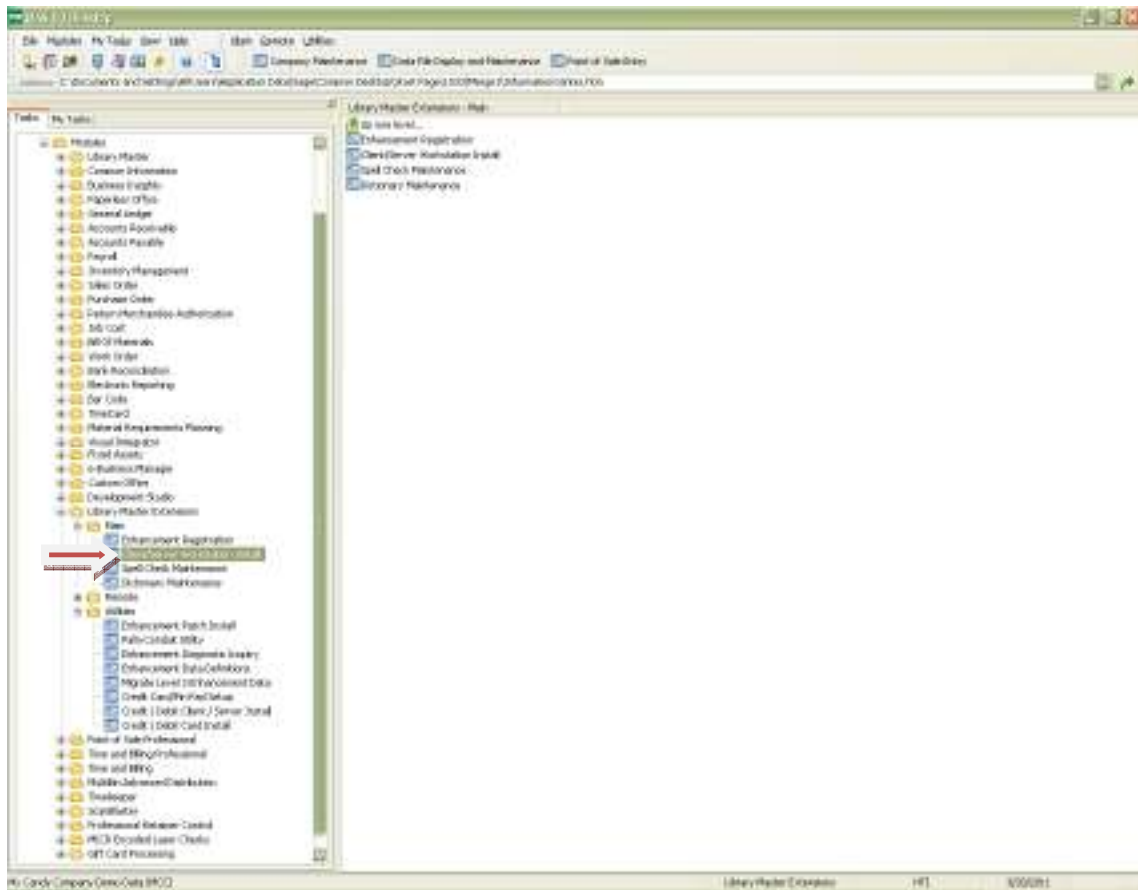
3. Start the Credit Card PIN Pad installation by hitting 'Next'.



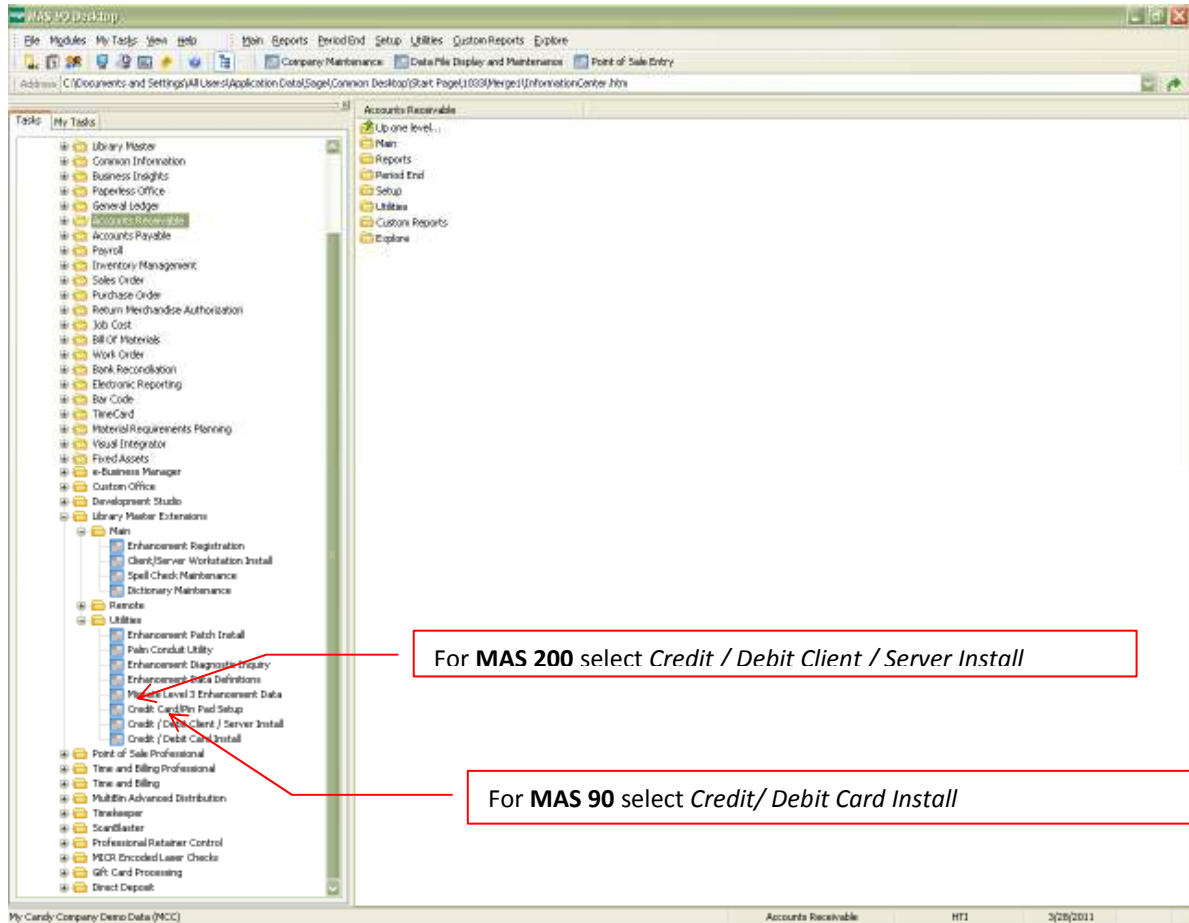


4. Launch your MAS 90 or 200. If you are not using MAS 200 please skip step 5 and go straight to step 6.

5. Launch MAS 90 or 200 and go to **Library Master Extensions > Main > Client/Server Workstation Install** and run it.



6. Go into **Library Master Extension > Utilities**



7. Repeat steps 5 - 6 on all workstations.

8. Please note that your payment screen should be similar to the one below:

